

## INTRODUCING THE NEW MODEL 120 PANEL MOUNT ASSEMBLY



***The Model 120 housing and handle assembly has been totally redesigned!!*** The painted aluminum die casting has been replaced with a new high strength, fiberglass reinforced plastic alloy housing, eliminating the tarnished look of chipped or scratched paint.

We went beyond improvements to the housing by enhancing the complete assembly. The slidlock is improved to provide smoother operation. The anti-rotation pin of the existing slidlock is removed to provide a larger engagement area for durable locking and a stronger handle shaft. Molded inside the plastic slidlock is a metal insert to provide a strong, solid lock.



Next we added a hub that is This provides a a new method of travel stop for the significantly strengthens the handle



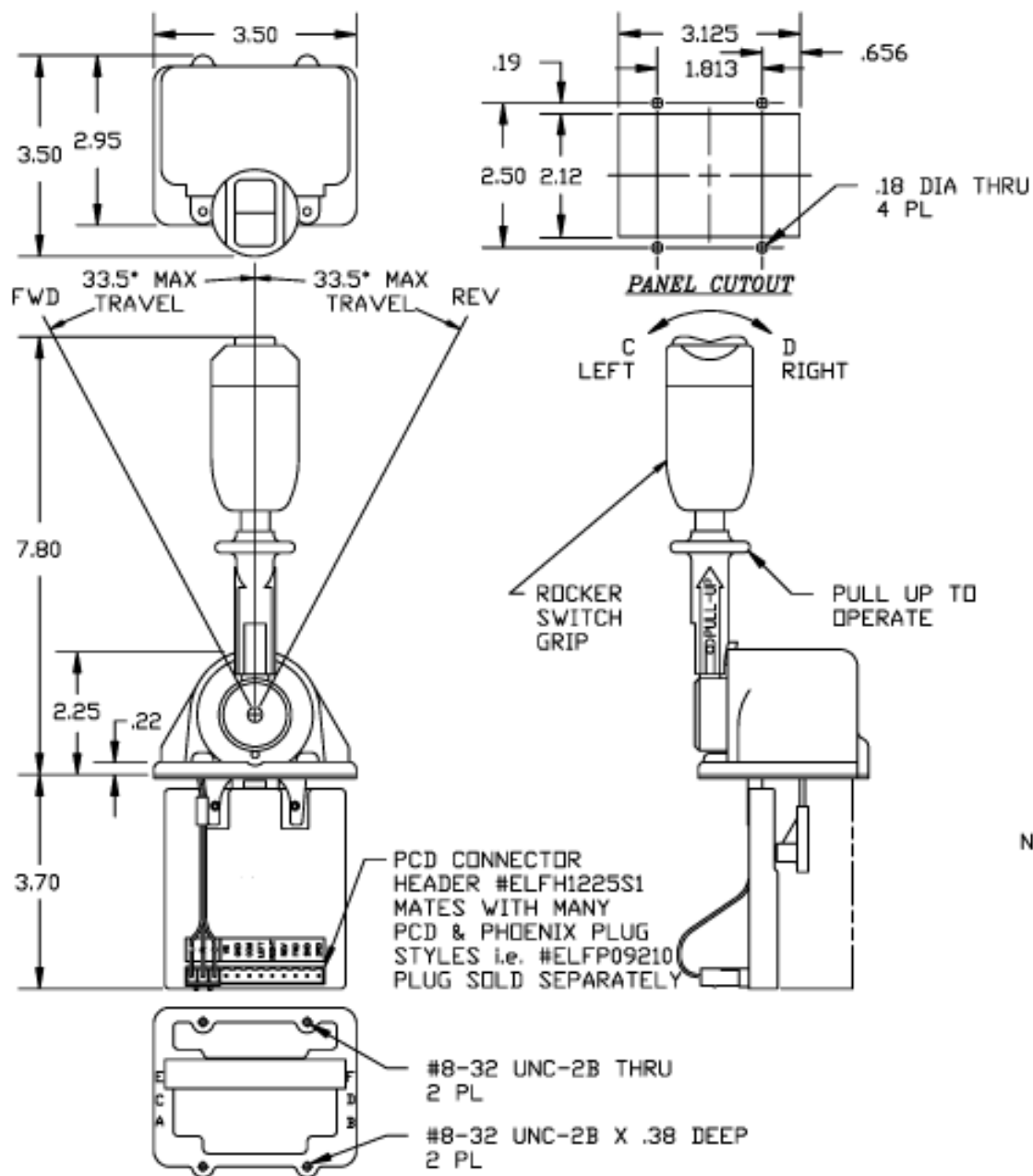
metal insert around the handle interlocked into the housing. stronger mechanical lock and control handle. This assembly at full handle throw.

Other improvements are in the centering spring area. We redesigned the torsion spring using thicker wire and less bends, greatly extending its life yet providing the same handle torque. Even the oil impregnated bronze bushing is new, now nearly twice as long as the original, reducing wobble in the control handle.

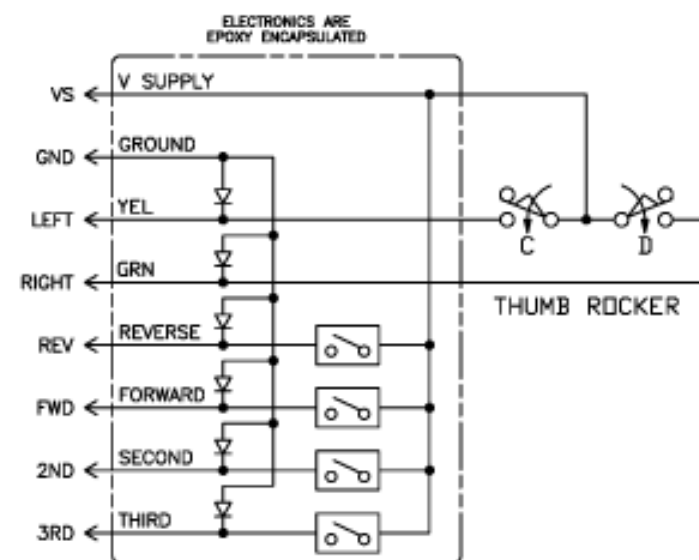


Another new feature is a recessed ID decal area on the hub, protecting the serial number decal from damage. A new recessed logo offers an area for a function decal.

But all is not changed with this new upgrade. The functionality, dimensions, and footprint remain the same, allowing compatibility with existing units in the field. For more information contact RGDHydraulics.



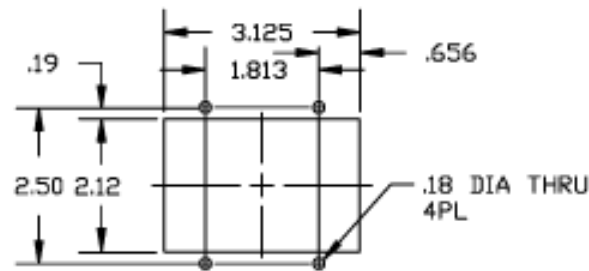
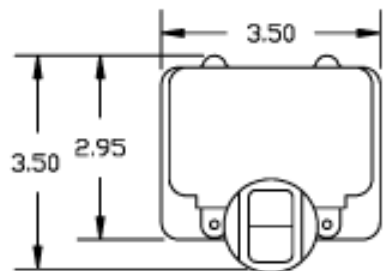
REV.	DESCRIPTION	DATE
A	CHANGED ROCKER SWITCH	08-24-99
JCH	CONNECTOR EDR #787	



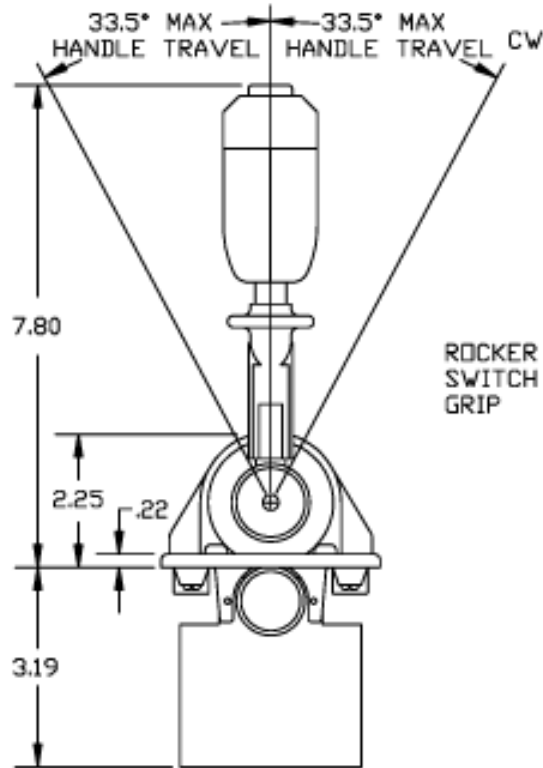
**ELECTRICAL CONNECTION**

- NOTES: 1) VOLTAGE SUPPLY IS TO BE 10-30VDC.  
 2) CONTROL HANDLE IS SPRUNG TO CENTER POSITION.  
 3) SLIDE LOCK IS SPRUNG TO LOCKED POSITION.  
 4) THE OUTPUTS (FWD, REV, 2ND & 3RD) ARE RATED @ 3.5 AMPS CONTINUOUS AND 8 AMPS PEAK.

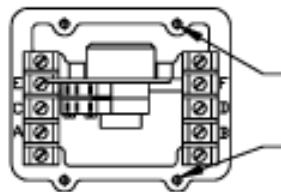
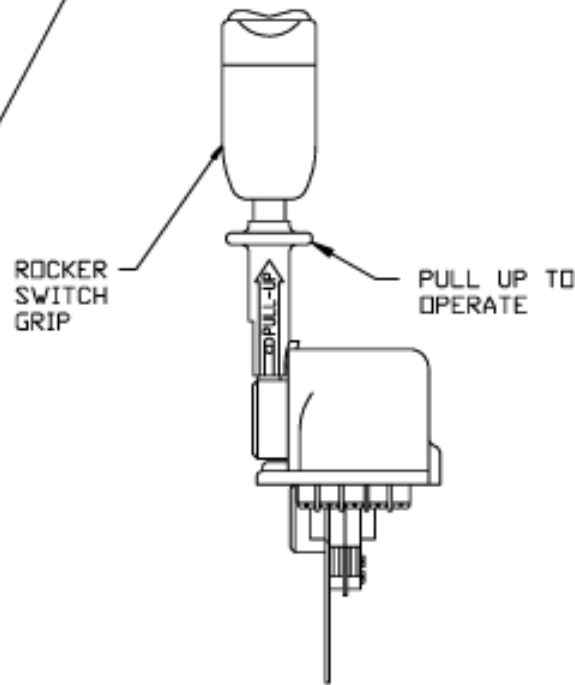
		DWG. NO.	REV. A
		SHEET	SCALE 1:2
<b>M120-1633 INSTALLATION DWG          THREE SPEED CONTACTLESS</b>			
DRAFTSMAN JCH	CHECK	PROJECT ENGINEER	DATE 07-13-98



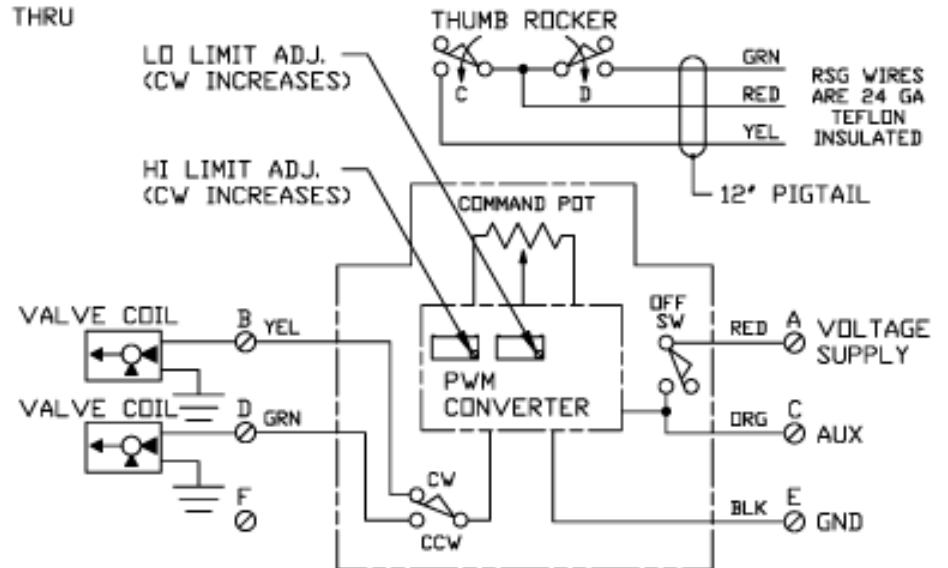
REV.	DESCRIPTION	DATE



**PANEL CUTOUT**



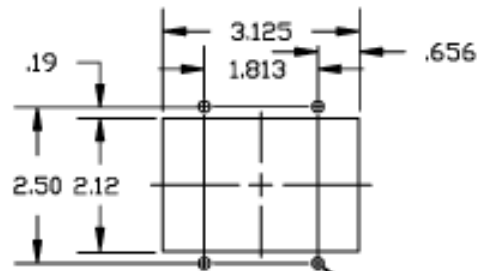
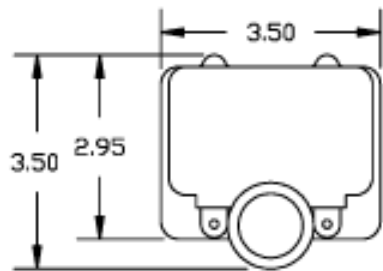
#8-32 UNC-2B THRU 2 PL  
 #8-32 UNC-2B X .38 DEEP 2 PL



**ELECTRICAL CONNECTION**

- NOTES: 1) VOLTAGE SUPPLY IS TO BE +12VDC.  
 2) WITH A 3.2 OHM VALVE COIL CONNECTED BETWEEN TERM. B & GND AND ANOTHER 3.2 OHM VALVE COIL CONNECTED BETWEEN TERM. D & GND, THE OUTPUT CURRENT WILL RANGE FROM 400 TO 1500mADC. FREQUENCY = 150Hz.  
 3) CONTROL HANDLE IS SPRUNG TO CENTER POSITION.  
 4) SLIDE LOCK IS SPRUNG TO LOCKED POSITION.

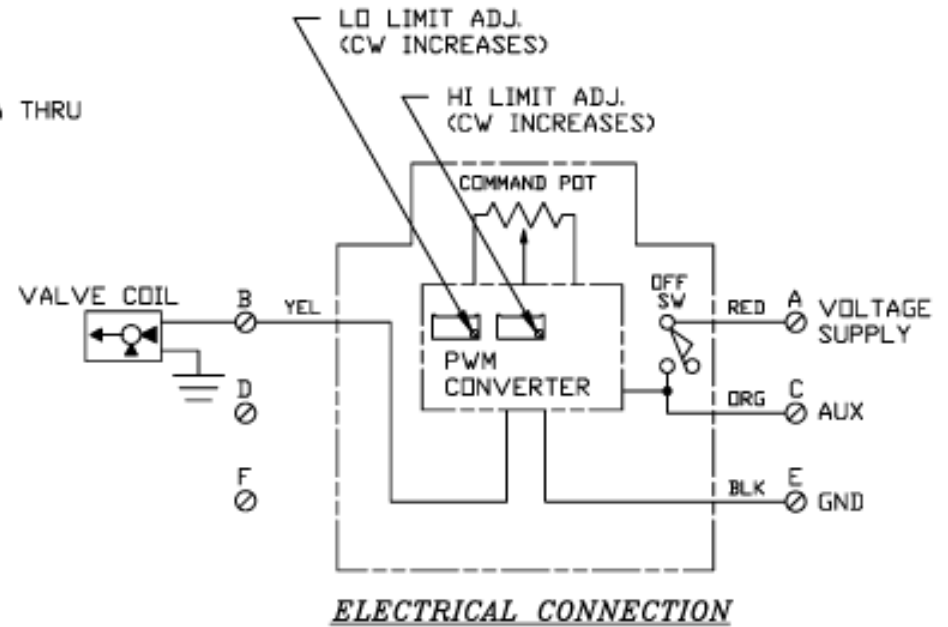
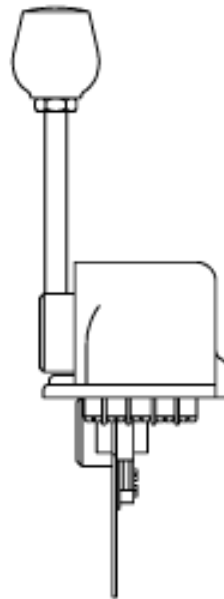
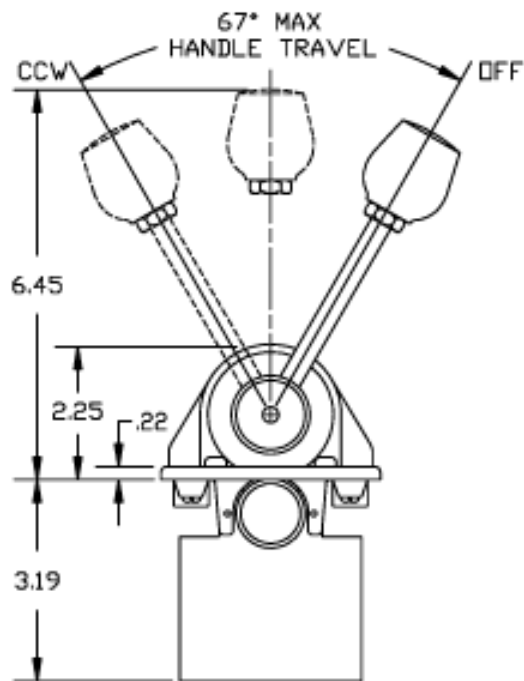
		DWG. NO.	REV.
		SHEET	SCALE 1:2
<b>M120-1523 INSTALLATION DWG</b>			
DRFTSMAN JCH	CHECK	PROJECT ENGINEER	DATE 10-19-95



REV.	DESCRIPTION	DATE

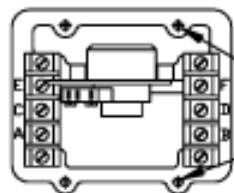
**PANEL CUTOUT**

.18 DIA THRU  
4 PL



**ELECTRICAL CONNECTION**

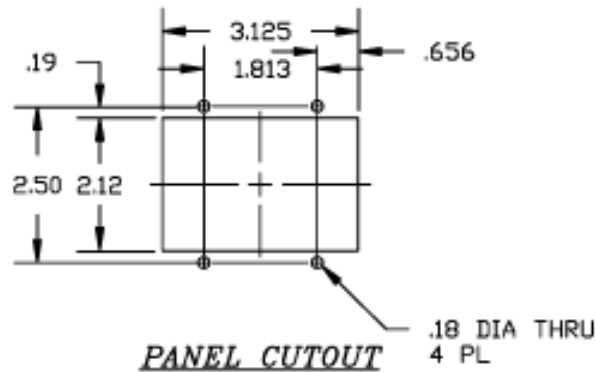
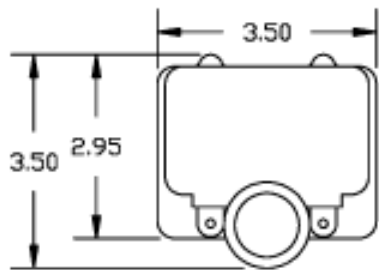
- NOTES: 1) VOLTAGE SUPPLY IS TO BE +24VDC.  
 2) WITH A 60 OHM VALVE COIL CONNECTED BETWEEN TERM. B & GND, THE OUTPUT WILL RANGE FROM 225 TO 7mADC. PWM FREQUENCY = 100Hz.  
 3) CONTROL HANDLE HAS FRICTION DRAG.



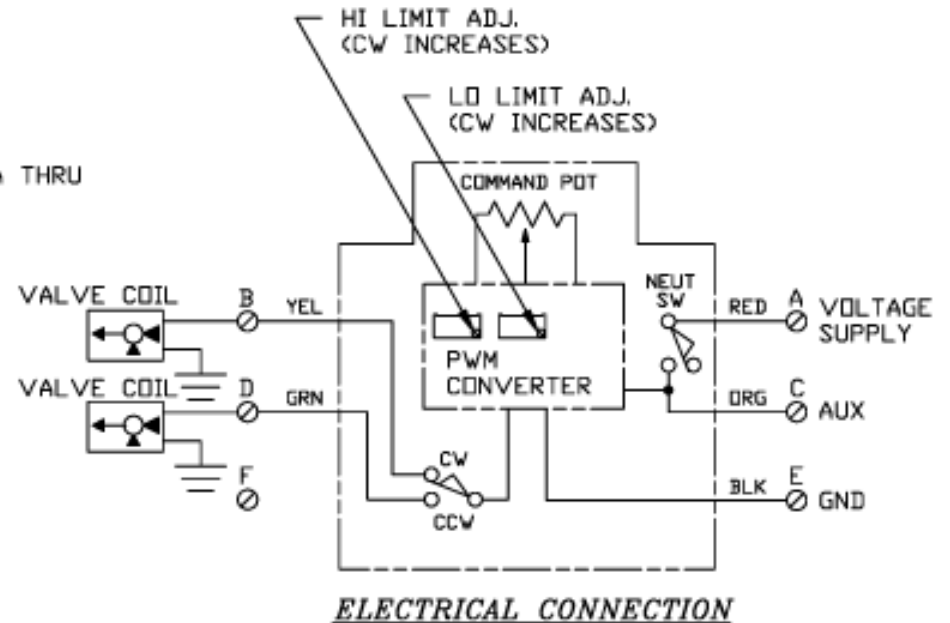
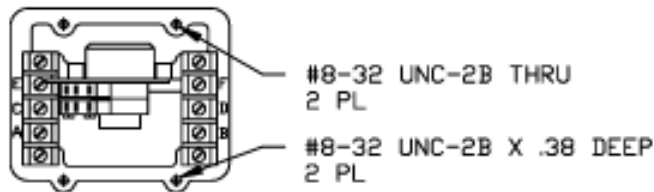
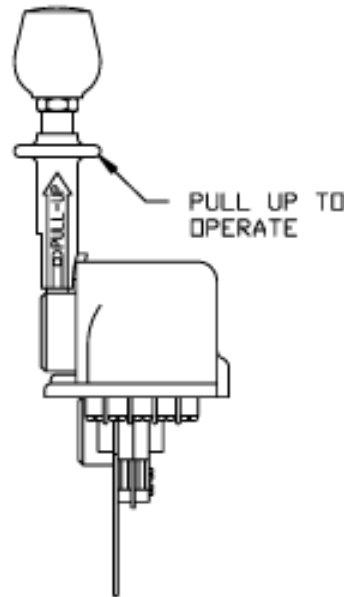
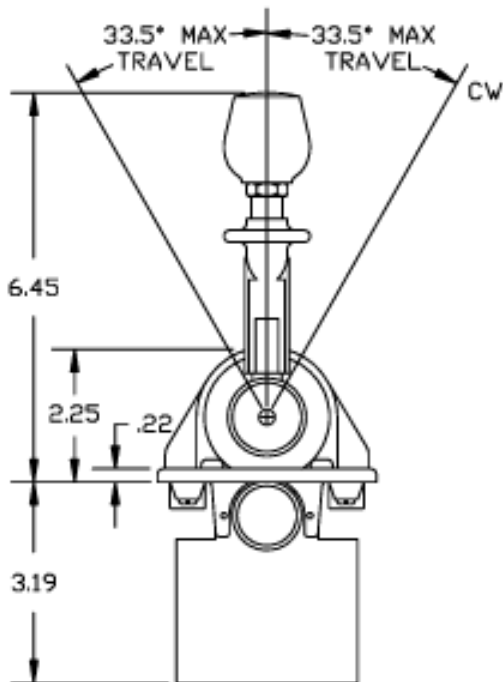
#8-32 UNC-2B THRU  
2 PL

#8-32 UNC-2B X .38 DEEP  
2 PL

		DWG. NO.	REV.
		SHEET	SCALE 1:2
M120-1463 INSTALLATION DWG			
DRAWN JCH	CHECK	PROJECT ENGINEER	DATE 02-24-95

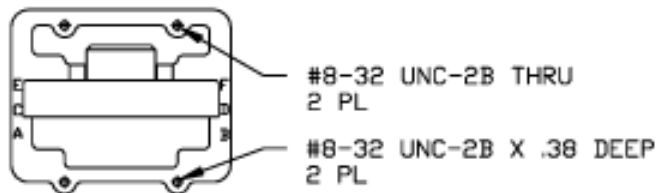
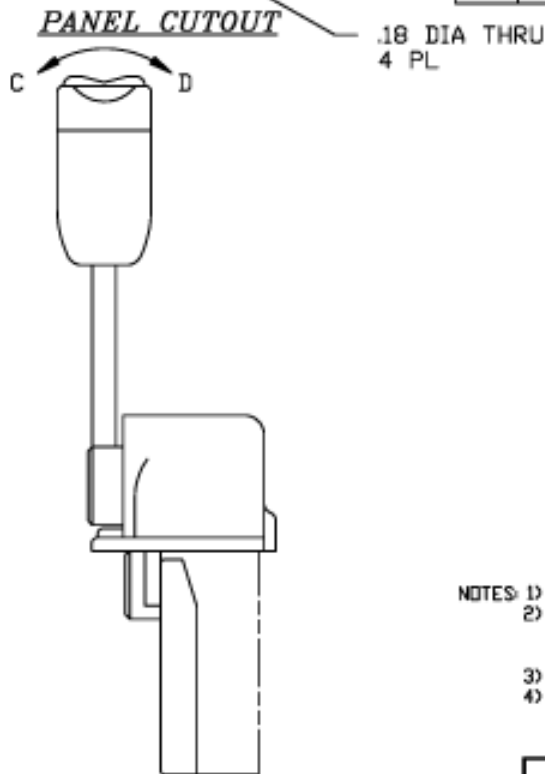
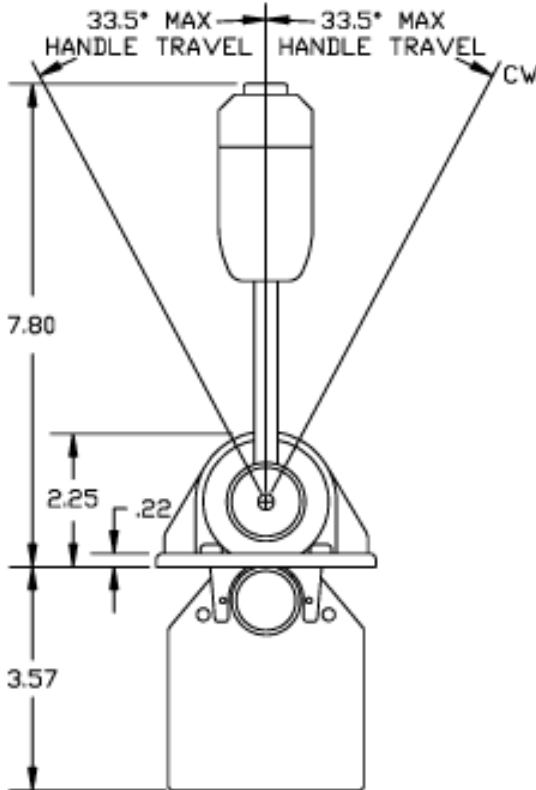
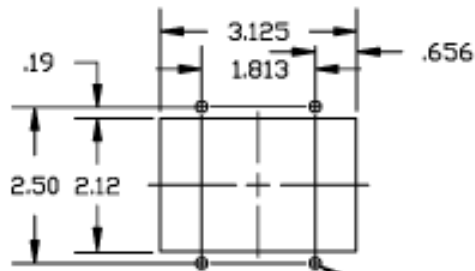
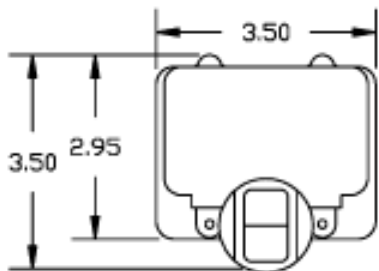


REV.	DESCRIPTION	DATE



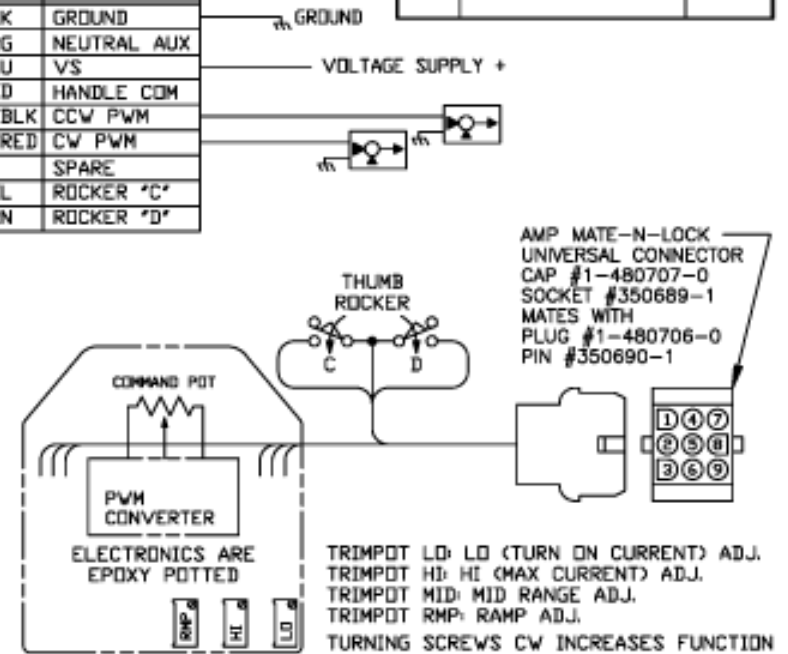
- NOTES: 1) VOLTAGE SUPPLY IS TO BE +24VDC.  
 2) WITH A 30 OHM VALVE COIL CONNECTED BETWEEN TERM. B & GND AND ANOTHER 30 OHM VALVE COIL CONNECTED BETWEEN TERM. D & GND, THE OUTPUT CURRENT WILL RANGE FROM 200 TO 500mADC. FREQUENCY = 50Hz.  
 3) CONTROL HANDLE HAS FRICTION DRAG.  
 4) SLIDE LOCK IS SPRUNG TO LOCKED POSITION.

		DWG. NO.	REV.
		SHEET	SCALE 1:2
M120-1434 INSTALLATION DWG			
DRAFTSMAN JCH	CHECK	PROJECT ENGINEER	DATE 11-14-94



TERM	COLOR	FUNCTION
1	BLK	GROUND
2	DRG	NEUTRAL AUX
3	BLU	VS
4	RED	HANDLE COM
5	YEL/BLK	CCW PWM
6	YEL/RED	CW PWM
7		SPARE
8	YEL	ROCKER "C"
9	GRN	ROCKER "D"

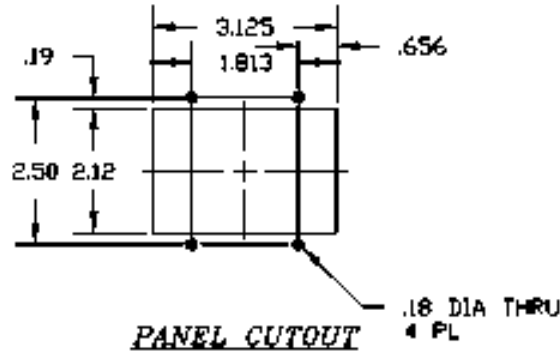
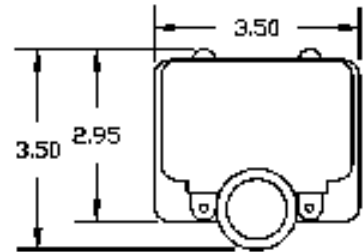
REV.	DESCRIPTION	DATE



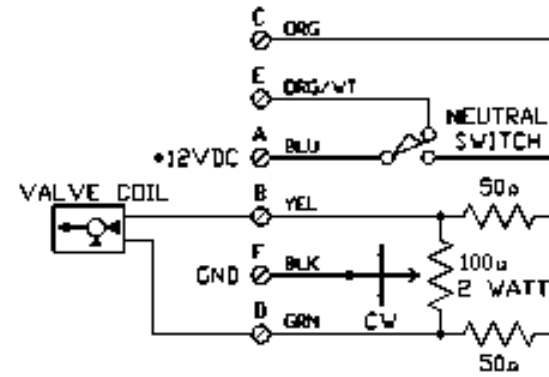
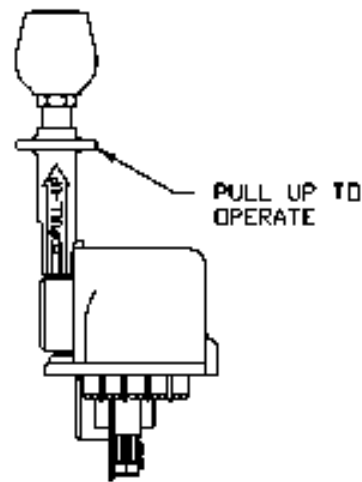
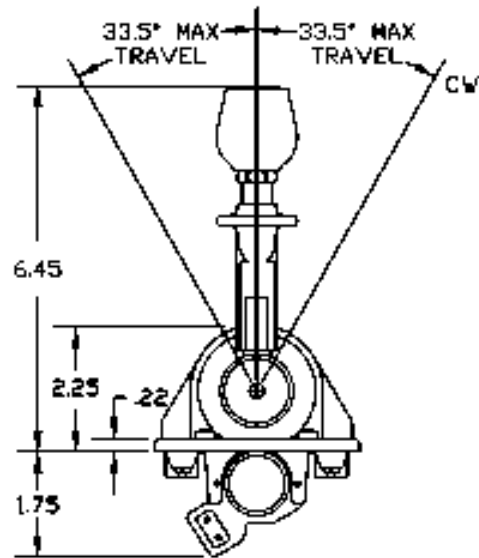
### ELECTRICAL CONNECTION

- NOTES: 1) VOLTAGE SUPPLY IS TO BE +24VDC.  
2) WITH A 27 OHM VALVE COIL CONNECTED BETWEEN TERM 5 & GND, AND ANOTHER 27 OHM VALVE COIL CONNECTED BETWEEN TERM 6 & GND, THE OUTPUT CURRENT WILL RANGE FROM 370 TO 720mADC. PWM FREQUENCY = 40-45Hz.  
3) CONTROL HANDLE IS SPRUNG TO CENTER POSITION.  
4) AUX OUTPUTS SWITCH VS WITH 1.5AMP CURRENT LIMIT. NEUTRAL AUX OUTPUT SWITCHES SIMULTANEOUS WITH EACH PROPORTIONAL OUTPUT.

		DWG. NO.	REV.
		SHEET	SCALE 1:2
M120-1388 INSTALLATION DWG			
DRAFTSMAN JCH	CHECK	PROJECT ENGINEER	DATE 08-04-94

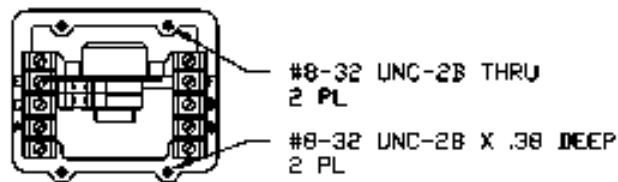


REV.	DESCRIPTION	DATE



**ELECTRICAL CONNECTION**

- NOTES: 1) VOLTAGE SUPPLY TO BE +12VDC.  
 2) WITH A 24 OHM VALVE COIL CONNECTED BETWEEN TERM B & D, THE OUTPUT CURRENT WILL RANGE FROM 16 TO 125MADC.  
 3) CONTROL HANDLE HAS FRICTION DRAG.  
 4) SLIDE LOCK IS SPRUNG TO LOCKED POSITION.



		PHL. NO.	REV.
		SCALE	1:2
M120-1533 INSTALLATION DWG			
DRAWN JCH	CHECK	PROJECT ENGINEER	NOV 10-30-95