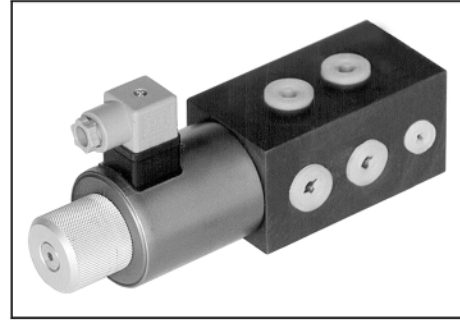


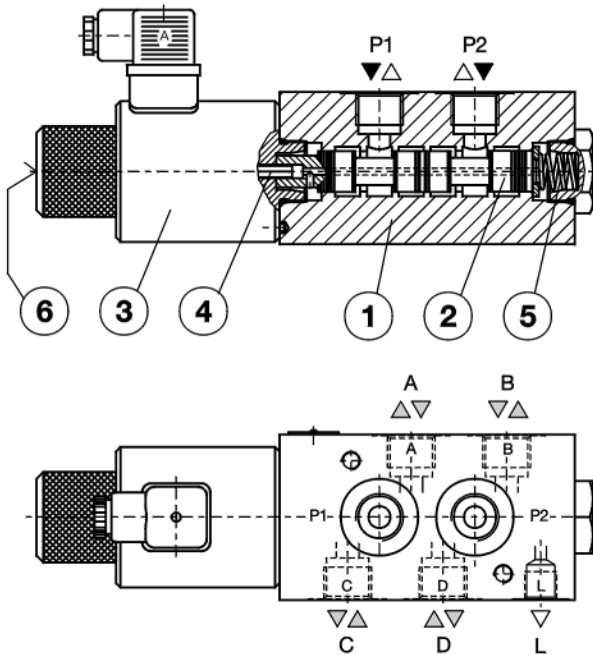
## 6/2-WAY DIRECTIONAL VALVES type KV

- NS 10
- to 315 bar
- to 80 l/min
- Direct operation by solenoid
- Plug-in connector for solenoids to ISO 4400
- Threaded connections to ISO 9974, ISO 1179
- Protection of solenoid IP 65 to DIN 40050



KV-6/2-10

### Description of operation



Directional valves type KV with direct solenoid operation control the direction of the hydraulic medium flow. They are mostly used as link between two consumers and the basic directional valve, when we want to control both consumers alternately by means of one basic directional valve.

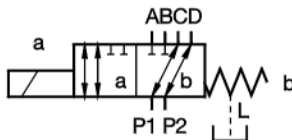
The KV type directional valves consist of a housing (1), a control spool (2), a solenoid (3) and a return spring (5).

Change-over to the operating position is done by energising the solenoid (3), whereby the solenoid plunger acts on the control spool (2) via the operating pin (4), thus clearing the corresponding flow ways and establishing respective links between the ports P1, A, B and P2.

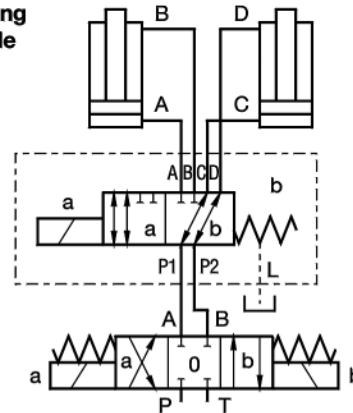
When the solenoid (3) is de-energised, the control spool (2) is returned to its neutral position by the return spring (5), thus establishing again the links between ports P1, C, D and P2.

The change-over can also be done manually by pressing the emergency hand operator (6).

### Symbol



### Mounting example



### Technical data

		Hydraulic	
Size		10	
Flow rate	l/min	80	
Operating pressure	with L	bar	315
	without L	bar	210
Oil temperature range	°C	-20 to +70	
Viscosity range	mm <sup>2</sup> /s	15 to 380	
Mounting position	optional		
Mass	kg	5,5	
Filtration	NAS 1638	9	

### Electrical

Supply voltage	V	12, 24 DC
Power	W	45
Switching frequency	1/h	15000
Ambient temperature	°C	to +50
Coil temperature	°C	to +180
Duty cycle	continuous	

### Ordering code

**KV-6/2-10 - - - - \***

Supply voltage  
 Threaded connections  
 Plug-in connector  
 Seal type  
 Special requirements to be briefly specified

### Supply voltage

direct voltage 24 V = 24 DC  
 direct voltage 12 V = 12 DC

### Threaded connections M / ML

M 22x1,5 / M14x1,5 = no desig.  
 M 27x2 / M14x1,5 = M 27

G 1/2 / G 1/4 = G 1/2  
 G 3/4 / G 1/4 = G 3/4

### Plug-in connector

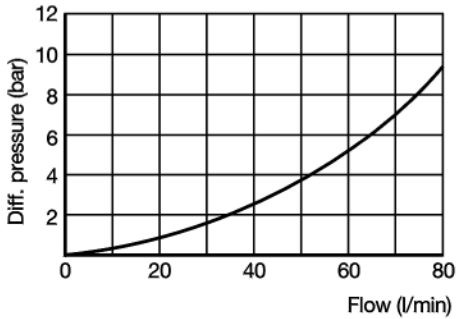
without signal lamp K1 = no desig.  
 with signal lamp K1L = L

### Seal type

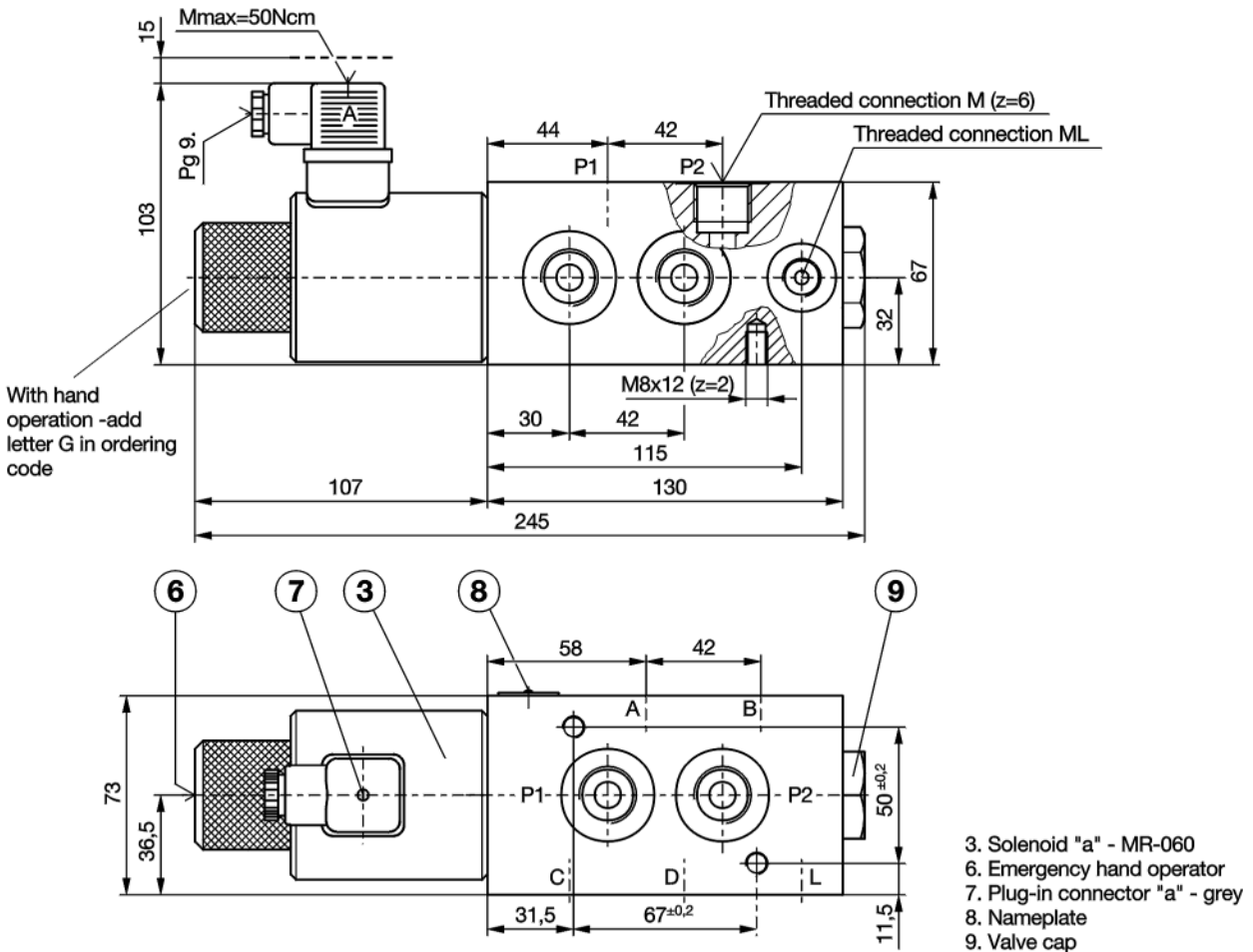
NBR seals for mineral oil HL, HLP, to DIN 51524 = no desig.  
 FPM seals for HETG, HEES, HEPG to VDMA 24568 = E

### Δ p-Q Performance curves

(measured at t = 50 °C and v = 32 mm<sup>2</sup>/s)



### Dimensions (mm)



- 3. Solenoid "a" - MR-060
- 6. Emergency hand operator
- 7. Plug-in connector "a" - grey
- 8. Nameplate
- 9. Valve cap